



HEALTH CARE
COST INSTITUTE

Power Your Analytics with HCCI's Leading Commercial Claims Data

Agenda

- What is HCCI?
- What can I do with HCCI data?
- What is in the ESI claims dataset?
- What makes HCCI data different?
- How can I access HCCI data?



What is HCCI?

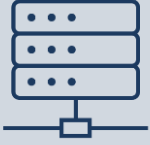


HCCI is a mission-driven, independent, non-profit organization at the nexus of data, analytics, and action.

We were founded in 2011 to leverage unique, high-quality data and extraordinary expertise in research and policy to give decisionmakers the tools they need to lower health care costs and increase value in the health care system.



What HCCI does



Data Aggregation, Governance, Licensing

Academic and policy researchers use our data for their projects.



Thought Leadership and Original Research

HCCI conducts impactful, relevant research using our dataset and government data sources.



Government Data Analytics

HCCI works with clients to analyze Medicare and Medicaid data. HCCI is also a national Qualified Entity.



Multi-Payer Datasets and Transparency Tools

*Guroo.org is HCCI's consumer-facing price transparency tool.
HCCI also operates Florida's All Payer Claims Database.*



What can I do with HCCI data?



HCCI's data can inform the most pressing, impactful health policy topics



Low-Value Care



Rural Health



COVID-19



Children's Health



Consolidation



Mental Health



Telehealth



Maternal Health



Markets



Prices



Prescription Drugs



Preventive Care

- Prevalence of specific diseases, real-world treatment, and outcomes among patients with specific diseases or conditions
- Adherence to clinical guidelines and over- and under-use of tests, procedures, and medications
- Geographic variation in treatment patterns and patient outcomes
- The effects of medication adherence and changes in therapy on patient outcomes
- Comparative effectiveness of medications and treatments

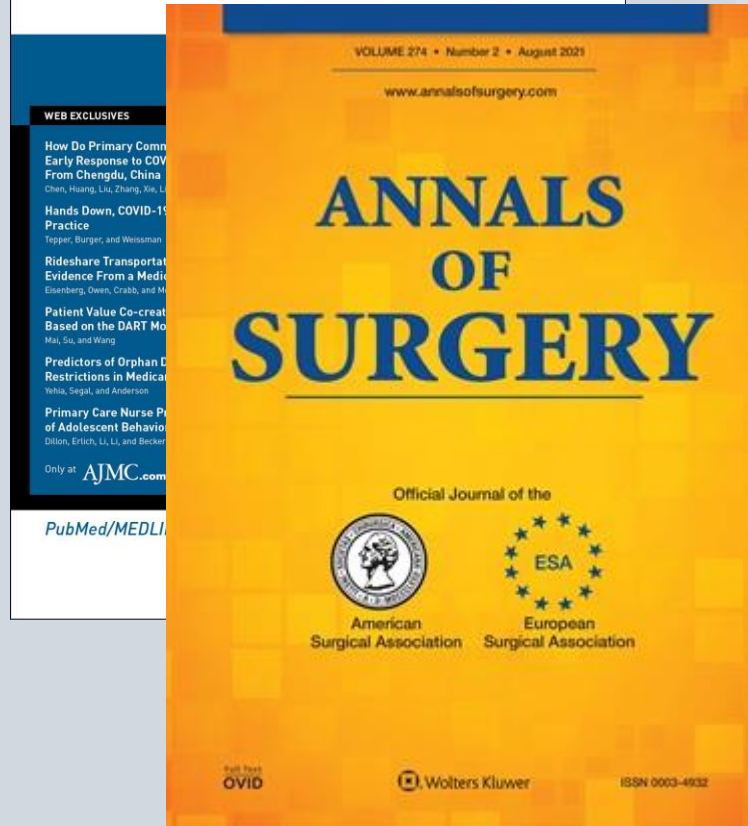


Researchers from leading research and policy organizations rely on HCCI's data

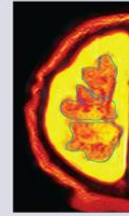
- Cornell University
- Harvard University
- University of Washington
- University of Michigan
- University of California Berkely
- Yale University
- Brookings Institution
- Federal Trade Commission
- Congressional Budget Office
- MedPAC
- RAND



Research using HCCI's Data is Published/Sited in Premier Journals & Government Reports



- Expert Review
- 379 Diet and fertility
- 390 NSAID resistance in epidemiology, caus
- 401 Human placentoph
- Call to Action
- 411 Both patients and r
- providers can bene
- reform: 4 steps to i
- Viewpoint
- 416 Applying surgical a
- standards in cesar



What is in the ESI claims dataset?



HCCI's Commercial Claims Dataset

55 Million Covered
Lives Annually



30+ Plans

1 Billion Claims Per Year

More than 30% ESI Population

Claims From
2012 to 2020



New data added every year!

Includes All 50 States and DC



De-Identified



HIPAA and Anti-Trust
Compliant



Data Elements



Longitudinal Data



MS-DRGs



ICD
Procedure and Diagnosis
Codes



5-Digit Zip Code
(enrollee and provider)



CPT/HCPCS Codes



Service Categories



Encrypted
Patient ID



Service Dates



Provider ID



Total Cost of Care



National Drug Codes



Place of Service

Link Care Across Hospitals, Physician
Offices, and Pharmacy

Quantify Length of Stay

Examine Clinical Outcomes
Over Time

Examine Provider-Level Practice
Patterns

Link to Other Data Sources

Apply External Algorithms, such
as risk scoring

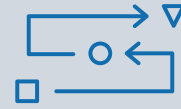


Designed by Researchers for Research



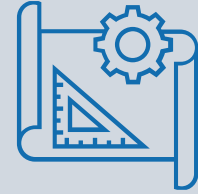
ROBUST DATA DOCUMENTATION

- Streamlined claims data
- Explanation and descriptive statistics for each field



COMMON CODE REPOSITORY

- Data Cleaning
- Grouping claims into common utilization measures (e.g., admissions)
- Identifying patient cohorts



USEFUL DATA RESOURCES

- Geographic crosswalks based on 5-digit ZIP code
- Diagnosis crosswalks for ICD Codes
- Service category crosswalks for DRG, CPT, NDC



What Makes HCCI Data Different?

① Covers all ESI lives the payer manages, either as direct payer or ASO. Not sampled from certain employers, plan types, etc.

② Actual allowed amounts

③ Five-digit zip code of provider and patient

④ Encrypted Patient IDs to enable longitudinal analyses

⑤ Encrypted Provider ID facilitates provider-level analysis

Plus policy-relevant variables like network flag, site of service, facility fees



Accessing HCCI 2.0 Data



HCCI only licenses our ESI data for non-commercial purposes



- Academic Researchers at any college or university
- Government Agency Researchers
- Some research-focused non-profits



Commercial Purposes

Data cannot be used to generate profits

HCCI Data Access Journey

1 Develop Research Proposal and Submit Application

➔ **Scientific Review:** Feasibility, Data Integrity Committee
Logistics: Data Use Agreements, Participation Agreement, Account Set Up, Invoicing

2 Access the Data via Secure Remote Environment

➔ **Data Integrity Review:** Exports and work products
Reviewing for adherence to masking rules and material misrepresentation

3 Publish



All research products must adhere to making rules to avoid re-identification

For Example:

- No analysis at the individual health plan level
- No reporting of health plan market shares based on the Data provided by Client and its authorized data custodian
- No identifiable profiling of providers
- Must follow HIPAA rules for reporting
- Must have a minimum of 5 unique providers in any group/category being reported.
- Must have a minimum of 11 unique beneficiaries in any group/category being reported.



What to Expect

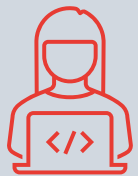


From application to data access usually takes a minimum of 6 weeks.



Data Licensing Agreement usually takes the most time

- We provide a standard agreement; Approval is faster when changes are minimal
- If your organization has licensed HCCI data before, suggest to your legal office that they consult the previous agreement



The application requires a well-defined research question and scope and a concise but specific research approach/methodology.

- We need enough detail to confirm that you will be able to answer your research question with our data.



Contact us with questions along the way – we're here to help!



Pricing for Access - Research Team

**Per Project Annual
Access Fee**

\$45,000

**Add-On: Extra Seat
Secure Data Enclave**

\$10,000

**Add-on: Encrypted NPI-
Level Dataset Merge**

\$3,000

Annual access fee includes **two seats** with access to the full HCCI Commercial Claims Dataset, along with **licenses** for SAS, Stata, Python, and other statistical software.



Pricing for Access - Student

**Per Project Annual Access
Fee**

\$15,000

**Add-on: Encrypted NPI-Level
Dataset Merge**

\$3,000

Annual access fee includes **one seat** with access to the full HCCL Commercial Claims Dataset, along with **licenses** for SAS, Stata, Python, and other statistical software.



Available Resources and Updates

- Data dictionary and additional resources available on HCCI's website
- Sign up for HCCI's newsletter to receive periodic updates
- Check out HCCI's public use files, briefs, and research studies for examples of what the data can do

HCCI Website:

www.healthcostinstitute.org

Email Us:

data@healthcostinstitute.org



Thank you!

Questions?

